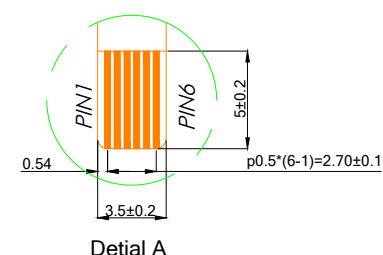
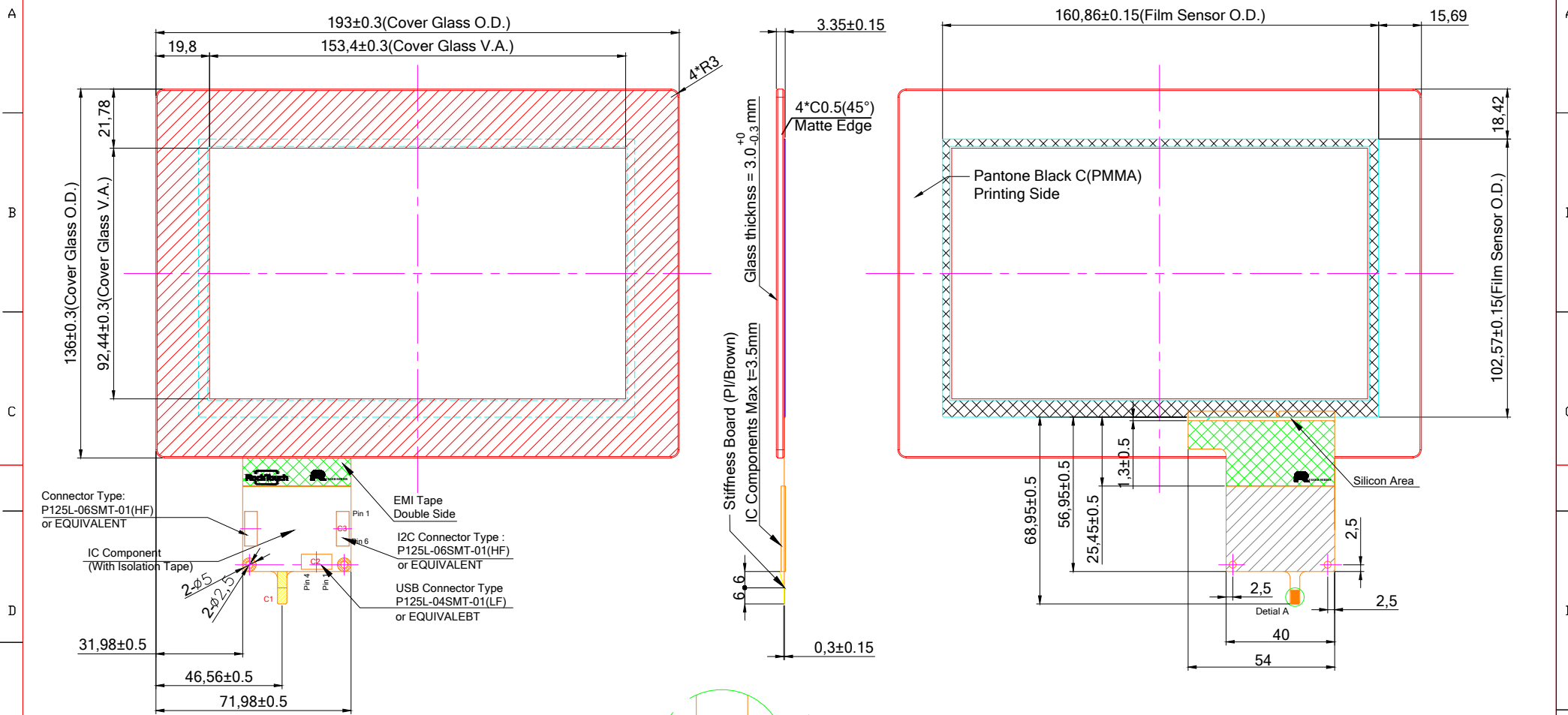


Front VIEW

Back VIEW



C1:USB Interface		C2: Pin Define for USB 4 pin		C3: Pin Define for I2C 6 pin	
Pin 01	VDD(5V)	Pin 01	GND	Pin 01	GND
Pin 02	D-	Pin 02	D-	Pin 02	SDA
Pin 03	D+	Pin 03	D+	Pin 03	SCL
Pin 04	GND	Pin 04	VDD	Pin 04	VDD(5V)
Pin 05	RST			Pin 05	INT
Pin 06	NC			Pin 06	RST

Customer Approval		Part Number		RTPC070W-R30BP1-C	
Date	Rev Date	Person	Description		
Company		RockTouch			
Name					
Signature	Date	Design By Date	Check By	Date	Approved By
	First Drawing	20190523	Jeff		

- Spec:
- General O.D. Tolerance : ±0.3
 - Border Type : Matte
 - Glass Type : Semi-Tempered
 - Surface Treatment : None
 - Background Printing : PMMA Color 1:Pantone Black C
 - Logo Printing : None
 - Transmittance Level : >85%
 - Important Notes :
- Note:
- Distance between LCD and Touch need to have minimum 1 mm otherwise thinner dimension can cause noise problem between LCD and touch screen
 - If customer put a front conductive bezel all around we need to have minimum thickness of 2mm, if the thickness is lower can cause interference
 - Refer to the integration guide to avoid any integration noise issue
 - Before mass production customer needs to ask custom firmware for his final machine

Date _____ Drawing Number _____