

AI Inference / DeviceEdge

Jetson Platform AIB-MX13/AIB-MX23



Features

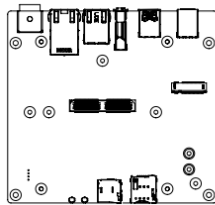
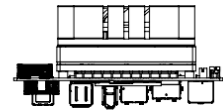
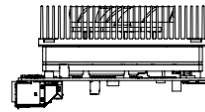
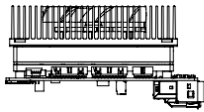
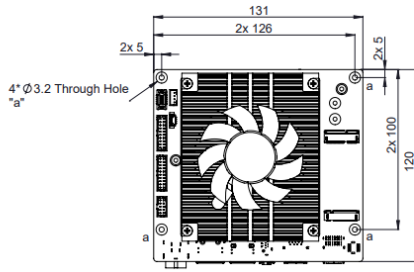
- Supports NVIDIA® Jetson AGX Orin™ 32GB/64GB module
- Wide Power Input Range 9 to 36VDC
- 1 x B-Key/1 x E-Key/1 x M-Key slot
- 1 x GbE/1 x 10GbE LAN port
- Operating Temperature -25°C ~ +80°C



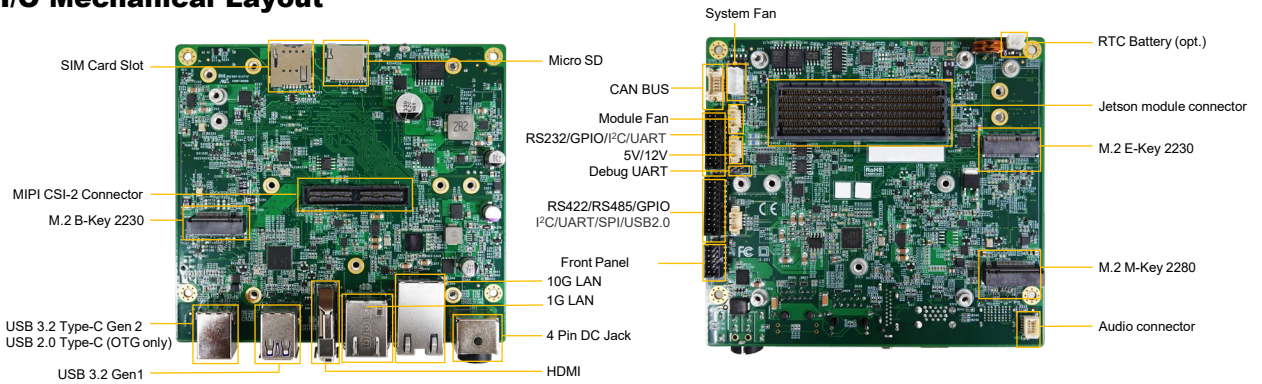
Specifications

Model Number	AIB-MX13	AIB-MX23
Module Compatibility	NVIDIA Jetson AGX ORIN 32GB	NVIDIA Jetson AGX ORIN 64GB
AI Performance	200 TOPS	275 TOPS
GPU	1792-core NVIDIA Ampere GPU with 56 Tensor Cores	2048-core NVIDIA Ampere GPU with 64 Tensor Cores
CPU	8-core NVIDIA Arm® Cortex A78AE v8.2 64-bit CPU 2MB L2 + 4MB L3	12-core NVIDIA Arm® Cortex A78AE v8.2 64-bit CPU 3MB L2 + 6MB L3
Memory	32 GB 256-bit LPDDR5 204.8 GB/s	64GB 256-bit LPDDR5 204.8 GB/s
Storage	64GB eMMC 5.1	
Display	1 x HDMI 2.1 Type A	
TPM	TPM v2.0 (optional)	
RTC	With super capacitor, battery optional	
Audio	LINE IN/OUT, Microphone (optional with daughter board)	
Camera Input	1x 16-Lane MIPI Expansion Connector	
LAN	1 x RJ-45 GbE port, 1 x RJ-45 10GbE port	
USB	2 x USB 3.2 Gen1 Type A, 1 x USB 2.0 Type-C (OTG only), 1 x USB 3.2 Type-C Gen 2	
I/O Interfaces	2 x I2C, 1 x I2S, 1 x SPI, 5 x GPIO, 1 x 3.3VDC/0.5A, 2 x 5VDC/0.5A, 1 x 12VDC/0.5A, 1 x USB 2.0	
Expansion	1 x M.2 B-Key 3042/3052 (LTE/5G - USB3) w/ micro sim holder: cellular function 1 x M.2 E-Key 2230 (PCIe/USB2): WIFI/BT/GPS function 1 x M.2 M-Key (NVMe) 2280: storage 1 x microSD slot	
MISC. Function	1 x Power/Recovery/Reset button 2 x UART, 1 x UART3 (Debug only) 1 x RS-232 1x RS-422 or RS-485 (Either one) 2 x CAN 2.0b with isolation	
Power Consumption	TBD	
Power Input / Connector	DC-in 9 to 36 VDC / 4-pin DC Jack Power Connector	
Dimension (W x D x H)	131 x 120 x 63.9 mm	
Net Weight	688g (with Fansink)	
Vibration	1 Grms, IEC 60068-2-64, random, 5 ~ 500 Hz, 1 hr/axis	
Shock	10 G, IEC 60068-2-27, half sine, 11 ms duration	
Temperature	Operating Temp. -25°C ~ + 80°C (-13°F~176°F) / Storage Temp. -25°C ~ + 80°C (- 13°F ~176°F)	
Humidity	95% @ 40°C Related Humidity, Non-condensing	
OS Support	Ubuntu 20.04	
Certification	CE/FCC Class A, IEC 62368	

System & Mounting Dimensions



I/O Mechanical Layout



Ordering Information

Model name	Description
AIB-MX13-1-A1	AGX ORIN 32GB, 1 x HDMI, 1 x GbE, 1 x 10GbE, 3 x USB, B/E/M Key, US power cord, 9 to 36 VDC input, -25°C ~ + 80°C
AIB-MX13-2-A1	AGX ORIN 32GB, 1 x HDMI, 1 x GbE, 1 x 10GbE, 3 x USB, B/E/M Key, EU power cord, 9 to 36 VDC input, -25°C ~ + 80°C
AIB-MX13-3-A1	AGX ORIN 32GB, 1 x HDMI, 1 x GbE, 1 x 10GbE, 3 x USB, B/E/M Key, JP power cord, 9 to 36 VDC input, -25°C ~ + 80°C
AIB-MX23-1-A1	AGX ORIN 64GB, 1 x HDMI, 1 x GbE, 1 x 10GbE, 3 x USB, B/E/M Key, US power cord, 9 to 36 VDC input, -25°C ~ + 80°C
AIB-MX23-2-A1	AGX ORIN 64GB, 1 x HDMI, 1 x GbE, 1 x 10GbE, 3 x USB, B/E/M Key, EU power cord, 9 to 36 VDC input, -25°C ~ + 80°C
AIB-MX23-3-A1	AGX ORIN 64GB, 1 x HDMI, 1 x GbE, 1 x 10GbE, 3 x USB, B/E/M Key, JP power cord, 9 to 36 VDC input, -25°C ~ + 80°C

