

RGS-7168GCP / RGS-7168GCP-E



➔ **Industrial 24-port rack-mount managed Gigabit Ethernet switch with 16xGigabit combo ports and 8x100/1000Base-X, SFP socket**

Features

- Support 24 Gigabit ports with **16 x Gigabit combo** ports and **8 x Gigabit SFP** ports
- Support **O-Ring** (recovery time < 30ms over 250 units of connection) and MSTP/RSTP/STP (IEEE 802.1s/w/D) for Ethernet Redundancy
- **Open-Ring** support the other vendor's ring technology in open architecture
- **O-Chain** allow multiple redundant network rings
- Support standard IEC 62439-2 **MRP** (Media Redundancy Protocol) function
- Supports IPv6 new internet protocol version
- Support Modbus TCP protocol
- Provided HTTPS/SSH protocol to enhance network security
- Supports SMTP client
- Support IP-based bandwidth management
- Support application-based QoS management
- Support IP Police security function
- Support DOS/DDOS auto prevention
- IGMP v2/v3 (IGMP snooping support) for filtering multicast traffic
- Support SNMP v1/v2c/v3 & RMON & 802.1Q VLAN Network Management
- Support ACL, 802.1x User Authentication for security
- Support 9K Bytes Jumbo Frame
- Multiple notification for warning of unexpected event
- Web-based ,Telnet, Console (CLI), and Windows utility (**Open-Vision v3.0**) configuration
- Support LLDP Protocol
- 19-inch rack-mountable design

Thunder  **Rack**

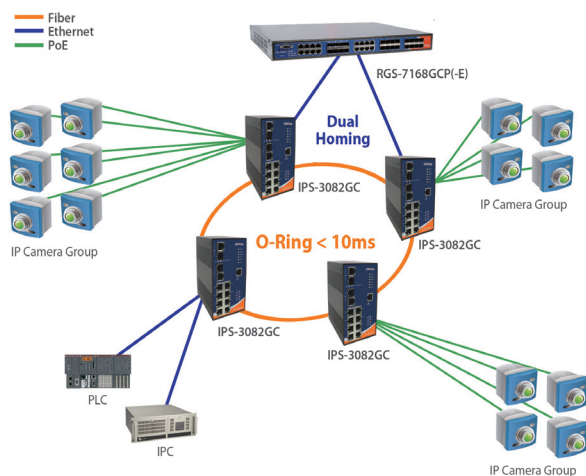


Introduction

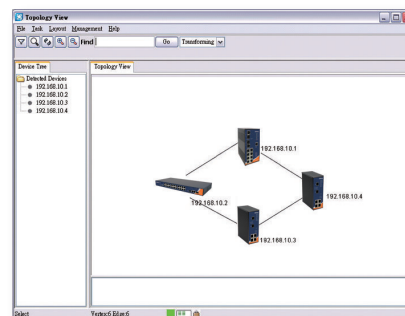
RGS-7168GCP series are managed redundant ring Ethernet switches with 16xGigabit combo ports and 8x100/1000Base-X SFP ports. With complete support of Ethernet Redundancy protocol, **O-Ring** (recovery time < 30ms over 250 units of connection) and MSTP/RSTP/STP (IEEE 802.1s/w/D) can protect your mission-critical applications from network interruptions or temporary malfunctions with its fast recovery technology. ORing's Thunder switch series provide advanced IP-based bandwidth management which can limit the maximum bandwidth for each IP device. User can configure IP camera and NVR with more bandwidth and limit other device bandwidth. ORing's thunder switch series also support application-based QoS. Application-based QoS can set highest priority for data stream according to TCP/UDP port number. ORing special IP police function can only permit allowed IP address with MAC address to access the network. Hacker cannot access the IP surveillance network without permission. It can avoid hacker from stealing video privacy data and attacking IP camera, NVR and controllers. ORing's thunder series switch also provided advanced DOS/DDOS auto prevention. If there is any IP flow become big in short time, ORing's Thunder switch will lock the source IP address for certain time to prevent the attack. It's hardware-based prevention so it can prevent DOS/DDOS attack immediately and completely. And all functions of RGS-7168GCP series can also be managed centralized and convenient by Open-Vision, Except the Web-based interface, Telnet and console (CLI) configuration. Therefore, the switch is one of the most reliable choice for highly-managed and Gigabit Fiber Ethernet application.

Open-Vision

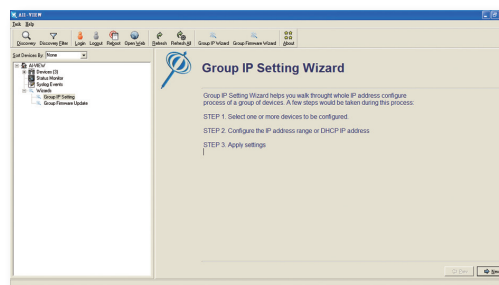
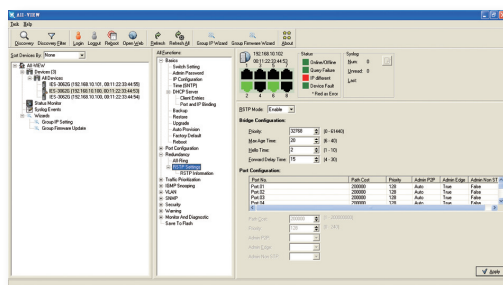
O Ring's switches are intelligent switches. Different from other traditional redundant switches, O Ring provides a set of Windows utility (Open-Vision) for user to manage and monitor all of industrial Ethernet switches on the industrial network.



Network connection



Topology View



Monitoring and Configuration interface

Application

Network connection

